

Berea, Athens and Corinth

Acts 17:10-18:23

April 10, 2016

Lesson #15

Paul's 2nd missionary journey

Acts 15:36-18:22

I. Forming the team (15:36-16:10)

❖ ASIA

II. Converts to Christ (16:11-18:17)

❖ EUROPE

III. Return Home (18:18-22)

❖ ASIA

Paul's 2nd missionary journey

Acts 15:36-18:22

I. Forming the team (15:36-16:10)

❖ ASIA

A. Barnabas/John Mark (15:39)

B. Paul/Silas (15:40)

C. Timothy joins Paul and Silas (16:1-5)

D. "we" Luke joins Paul/Silas/Timothy (16:6-10)

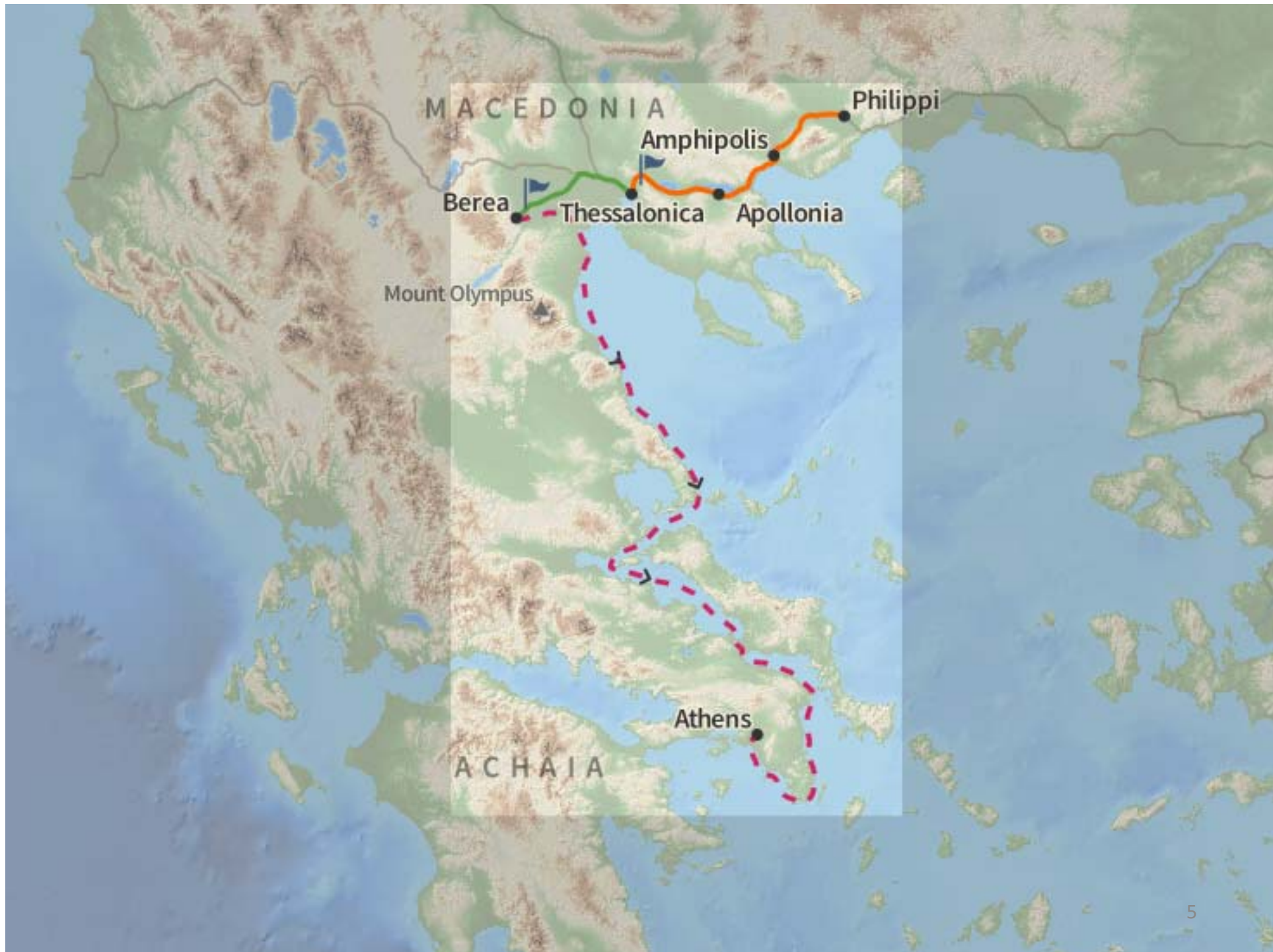
II. Converts to Christ (16:11-18:17)

**A. Lydia/household
converted at Philippi
(16:11-15)**

**B. Philippian
jailer/household
converted (16:16-40)**

**C. Many converted at
Thessalonica (17:1-9)**

**D. Many believe in Berea
(17:10-15)**



II. Converts to Christ (16:11-18:17)

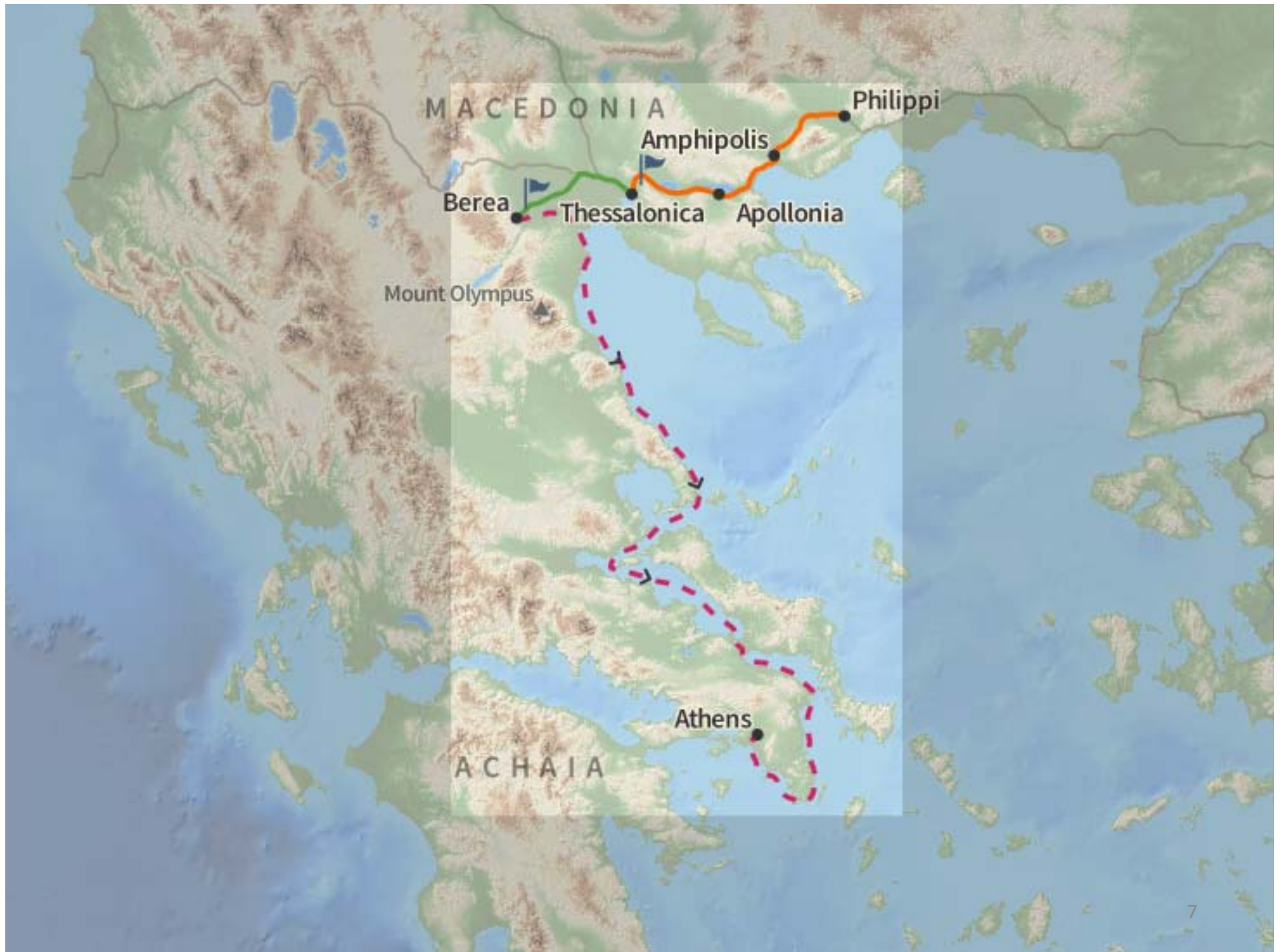
A. Lydia/household converted at Philippi (16:11-15)

B. Philippian jailer/household converted (16:16-40)

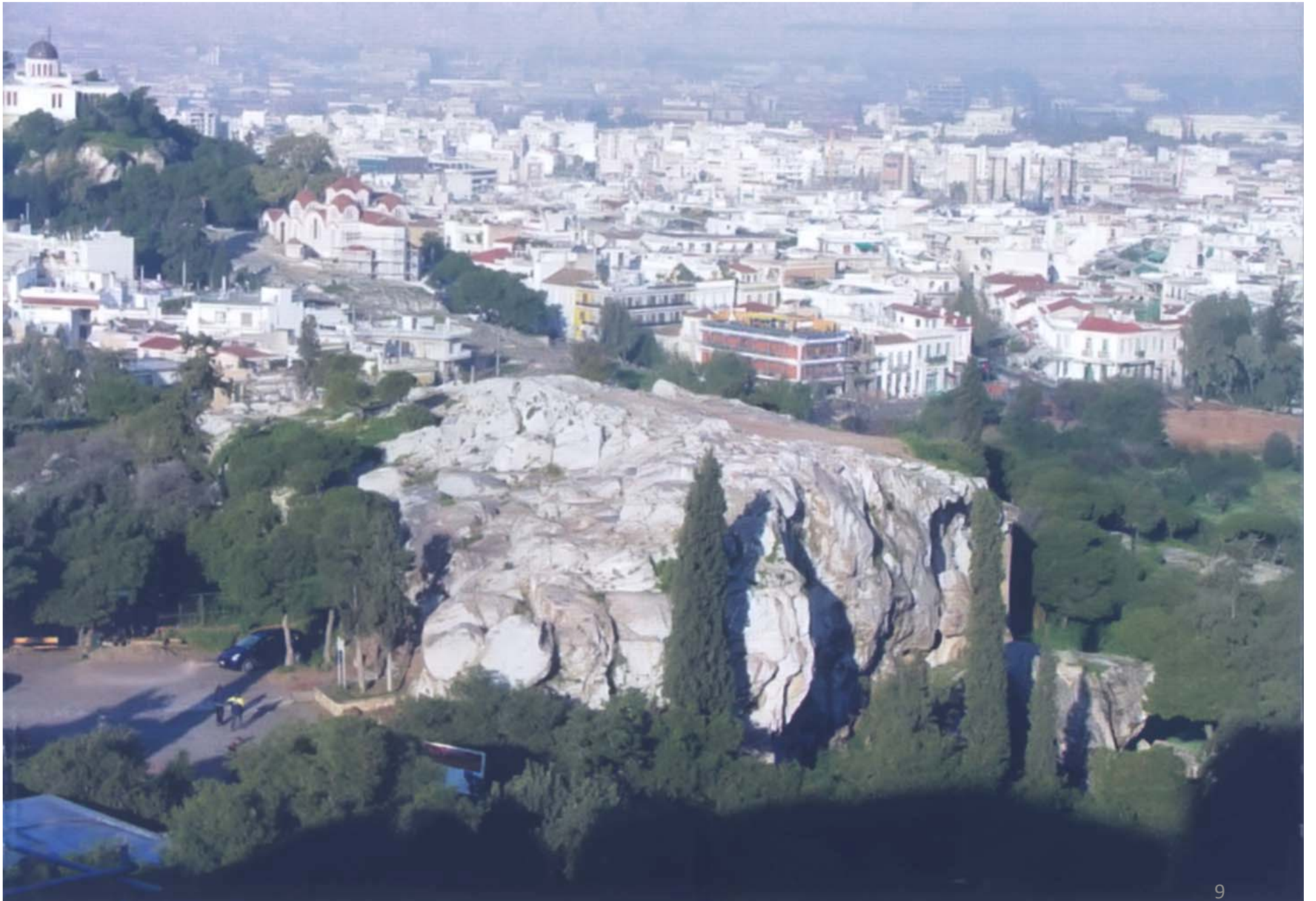
C. Many converted at Thessalonica (17:1-9)

D. Many believe in Berea (17:10-15)

E. Some believe in Athens (17:16-34)







II. Converts to Christ (16:11-18:17)

- A. Lydia/household converted at Philippi (16:11-15)**
- B. Philippian jailer/household converted (16:16-40)**
- C. Many converted at Thessalonica (17:1-9)**

- D. Many believe in Berea (17:10-15)**
- E. Some believe in Athens (17:16-34)**
- F. Crispus/household believe in Corinth (18:1-17)**





Paul's 2nd missionary journey

Acts 15:36-18:22

I. Forming the team (15:36-16:10)

❖ ASIA

II. Converts to Christ (16:11-18:17)

❖ EUROPE

III. Return Home (18:18-22)

❖ ASIA

A. Ephesus (18:18-21)



Paul's 2nd missionary journey

Acts 15:36-18:22

I. Forming the team (15:36-16:10)

❖ ASIA

II. Converts to Christ (16:11-18:17)

❖ EUROPE

III. Return Home (18:18-22)

❖ ASIA

A. Ephesus (18:18-21)

B. Caesarea/Jerusalem/Antioch (18:22)

