

Bible Study Methods
Rightly Dividing the Word of Truth

Predictive Prophecy

Lesson #13
August 28, 2016

Goals for the Summer

- **Increase independence in Bible Study**
- **Learn to exercise discernment**

Outline

- I. 5 step method (1-6)**
 - 1. Preparation**
 - 2. Observation**
 - 3. Interpretation**
 - 4. Evaluation**
 - 5. Application**
- II. Genres of Scripture (7-13)**

Hermeneutics

A set of rules used to interpret the Bible

Literal

- Every word has the same meaning it would have in normal usage
- There are metaphors, figures of speech etc....

Hermeneutics

A set of rules used to interpret the Bible

 **Grammatical**

○ The meaning of the text is in the grammar of the text

Hermeneutics

A set of rules used to interpret the Bible

Historical

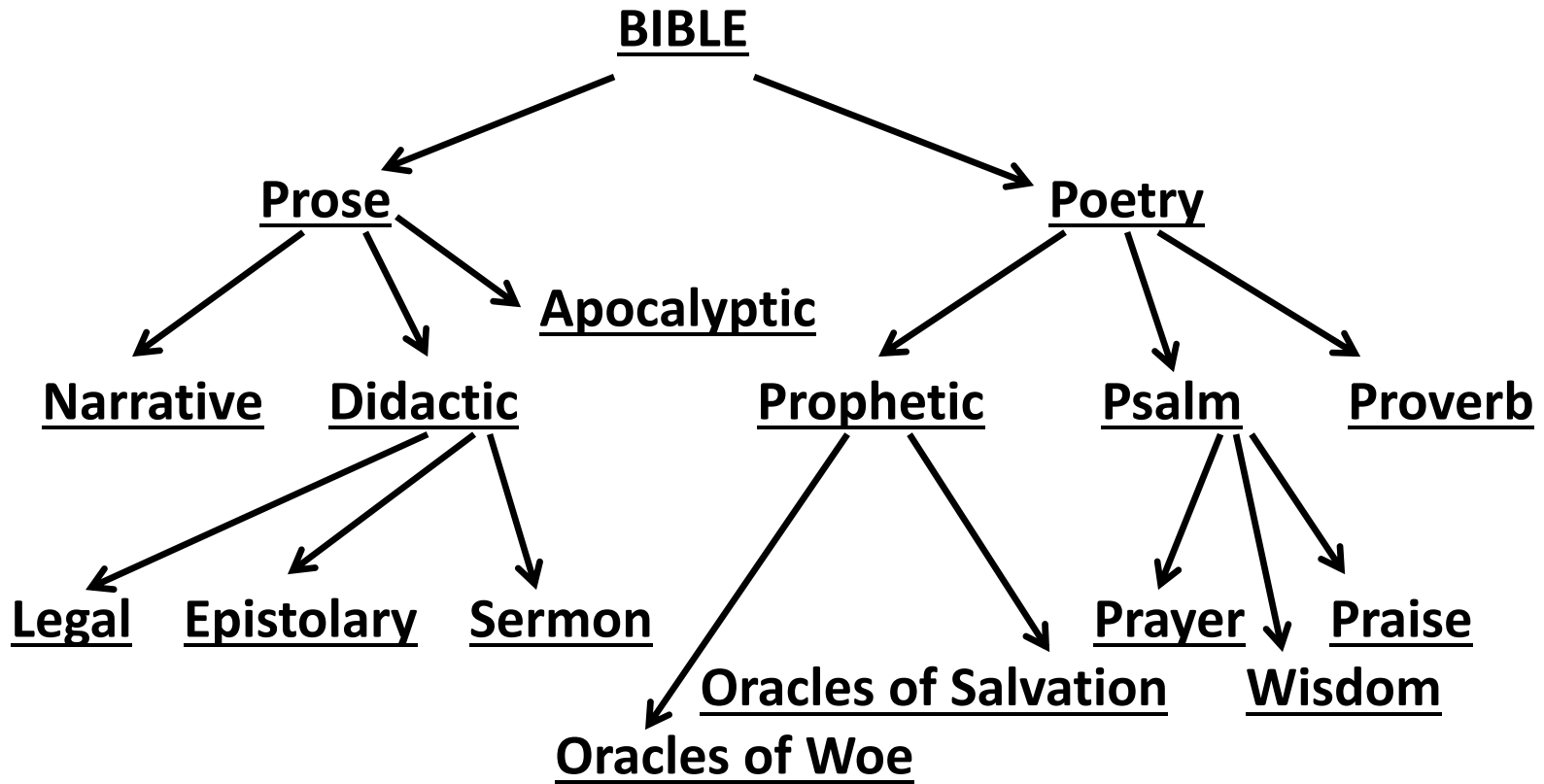
- Time
- Culture
- Geography
- Language (Hebrew/Aramaic, Greek)

Hermeneutics

A set of rules used to interpret the Bible

 **Literary**

- Different genres have unique characteristics.



Reasons to Study Prophecy

- Comforts – 1 Thessalonians 4:18
- Cleanses – 1 John 3:2-3
- Blessing – Revelation 1:3

Biblical Prophecy is...

Certain


Exact

Common Objections

- Many prophecies were written after the events they predict
- Jesus manipulated circumstances to fulfill a prophecy
- Jesus did not fulfill all the Messianic prophecies

PROPHECY	FULFILLMENT
Joshua 6:26	1 Kings 16:34
Isaiah 44:28	Ezra 6:3

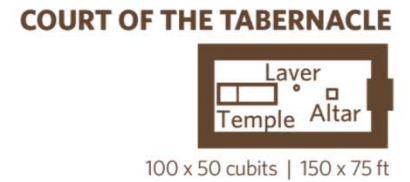
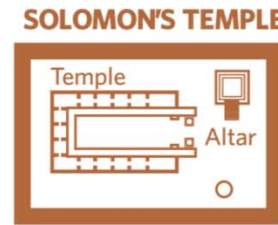
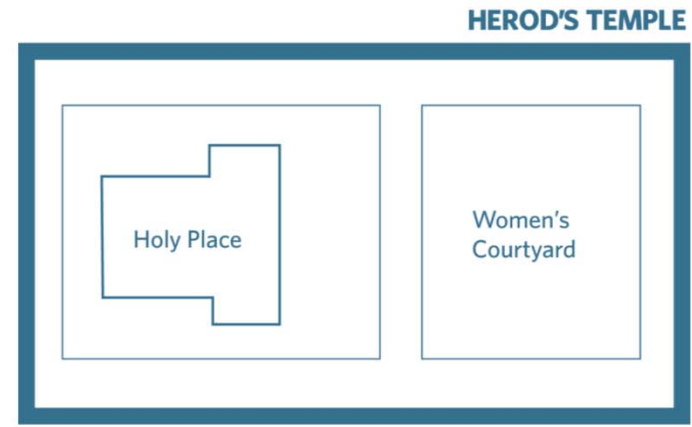
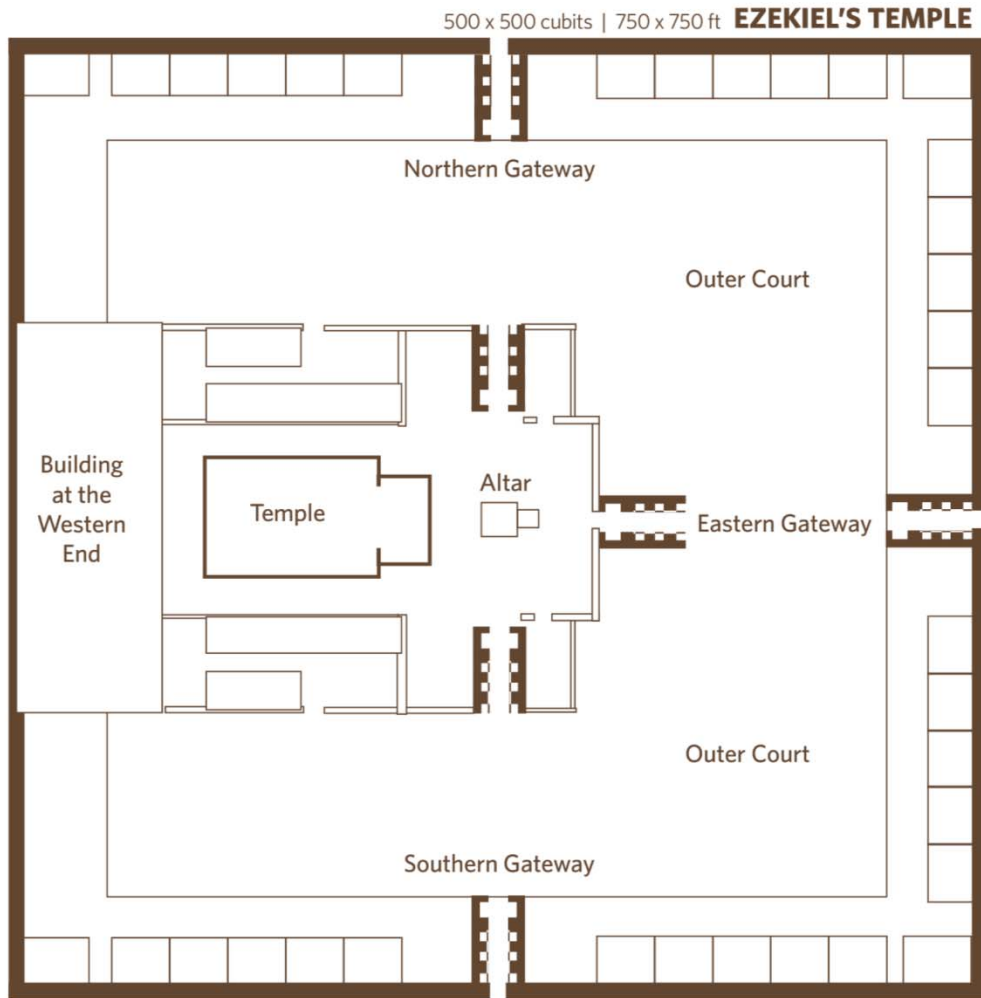
What about...?

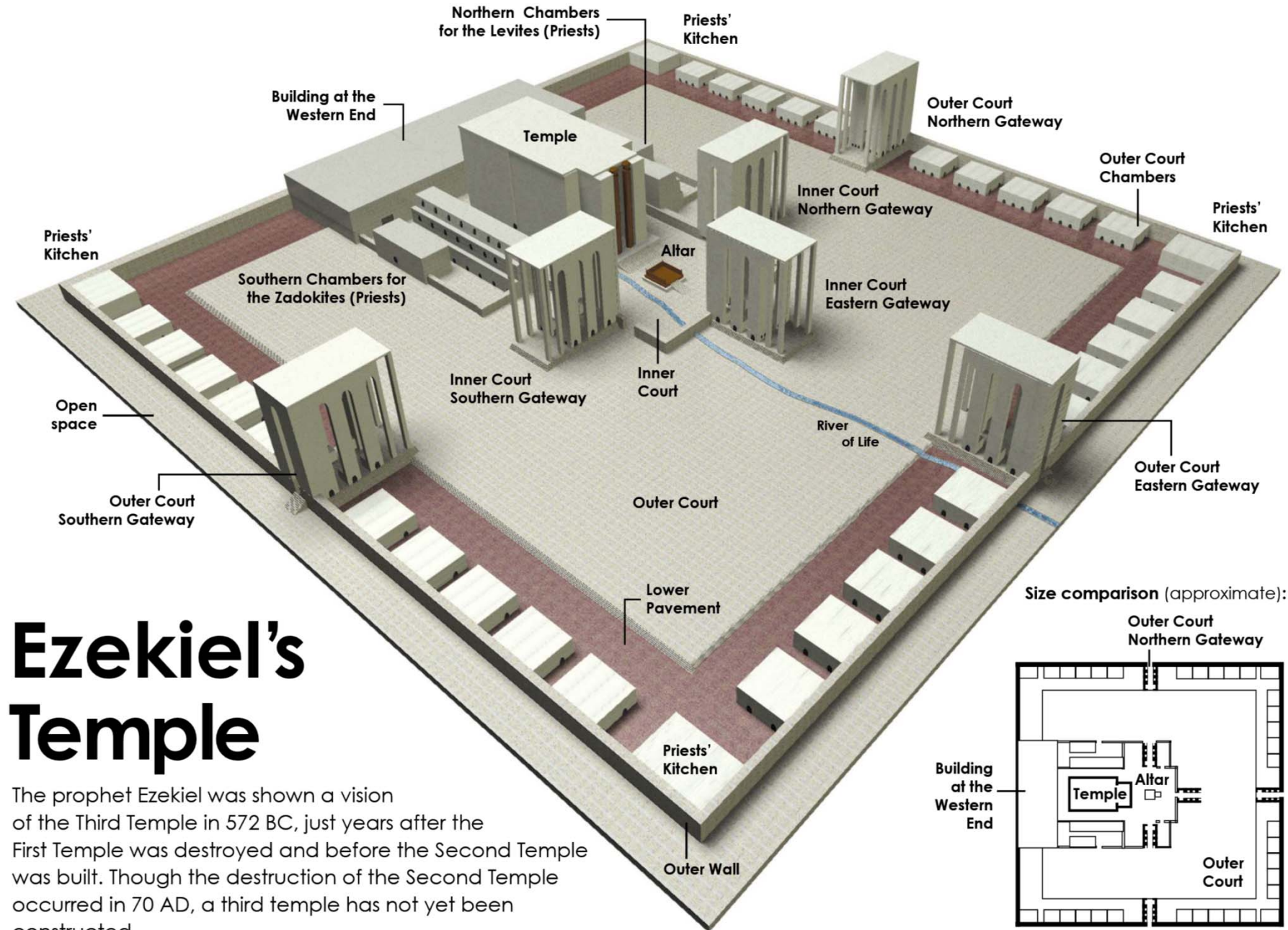
Genesis 15:13		Exodus 12:40-41
400 years		430 years

Interpreting Revelation

- Interpret something literally unless the context demands otherwise
- Notice words like “like” and “as”
- Be aware of when an interpretation is given
- Use common sense

Temple Size Comparisons



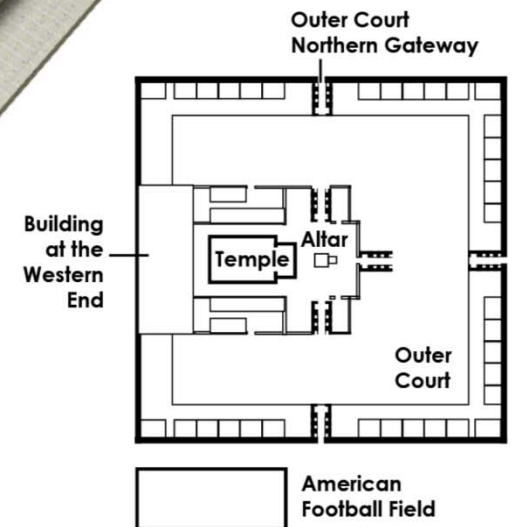


Ezekiel's Temple

The prophet Ezekiel was shown a vision of the Third Temple in 572 BC, just years after the First Temple was destroyed and before the Second Temple was built. Though the destruction of the Second Temple occurred in 70 AD, a third temple has not yet been constructed.

GRAPHIC BY KARBEL MULTIMEDIA,
 COPYRIGHT 2008 LOGOS BIBLE SOFTWARE

Size comparison (approximate):



Ezekiel 40:1-43:12 “New Temple”

Option #1

- Ezekiel describes a literal temple
- There will be no literal temple in the future...
 - John 1:14
 - 1 Corinthians 3:16-17
 - 2 Corinthians 6:16

**Jesus and the Church fulfill the
prophecy of Ezekiel’s temple**

Ezekiel 40:1-43:12 “New Temple”

Option #2

- Ezekiel describes a literal temple
- There will be a literal temple in the future...
 - The starting point for understanding Ezekiel’s temple is in the OT
 - Progressive revelation can reveal new information about a theme, but it does not cancel/change the authorial intention of the OT
 - Christ is the fulfillment of the OT. Yet, Christ may not be the details of all OT prophecies

Main Principles for Interpreting the Bible

- Interpret based on authorial intention**
- Interpret Scripture with Scripture**
- Interpret literally**